



Central Business District Tolling Program

Detection Point Installation

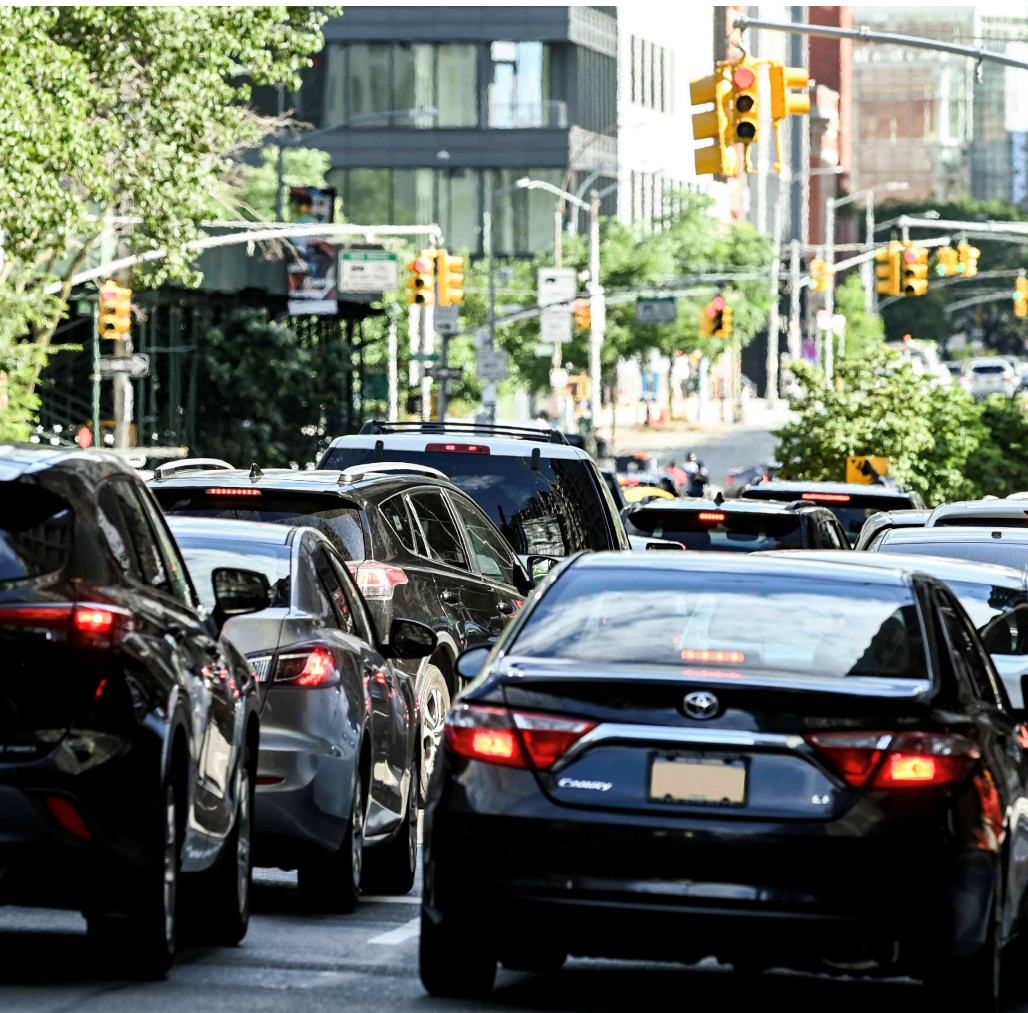


Bridges and Tunnels

Stakeholder Briefing

July 12, 2023

Program Objectives



- Reduce daily vehicle-miles traveled (VMT) within the Manhattan CBD by at least 5 percent
- Reduce the number of vehicles entering the Manhattan CBD daily by at least 10 percent
- Create a funding source for capital improvements and generate sufficient annual net revenues to fund \$15 billion for capital projects for the MTA Capital Program
- Establish a tolling program consistent with the purposes underlying the New York State legislation entitled the MTA Reform and Traffic Mobility Act

Program Status

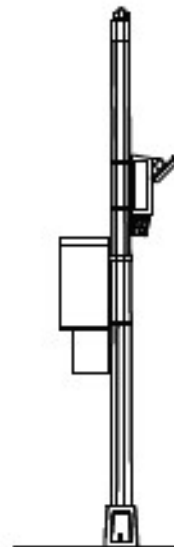
- Federal environmental approval – Finding of No Significant Impact (FONSI) received in June 2023
- DBOM contractor (TransCore) given authorization to proceed with detection point installation on June 27, 2023
- Installation of detection point equipment scheduled from July 2023 through late December 2023
- Program Go-Live scheduled for May 2024

Infrastructure Locations

- Detection points located to detect vehicles both entering or remaining in the zone below 60th Street
 - Detection points placed at entrances and exits
 - Northern boundary generally has detection points between 60th and 61st Streets
 - Algorithm used for Excluded Roadways (West Side Highway and FDR Drive) and to minimize infrastructure



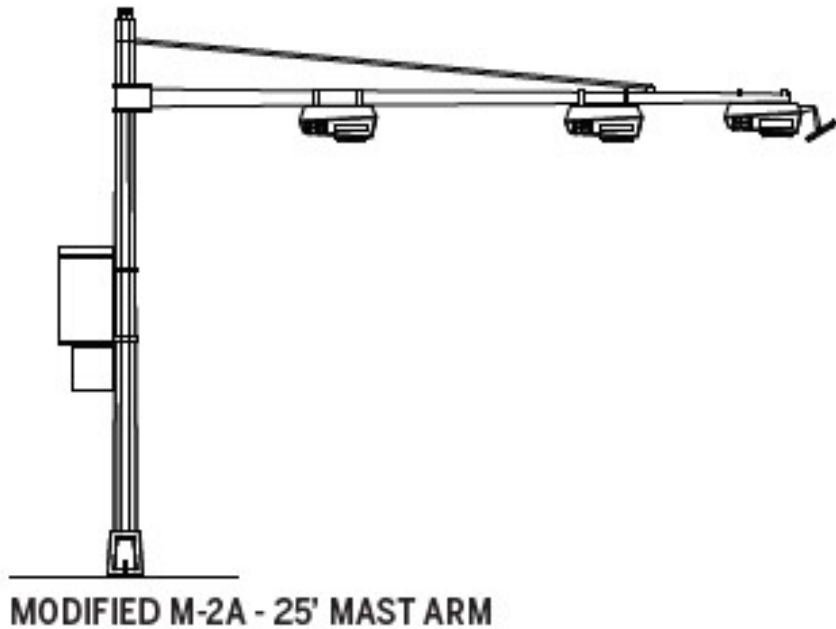
Typical Infrastructure – Pole mounted equipment



MODIFIED M-2A - SIDEFIRE



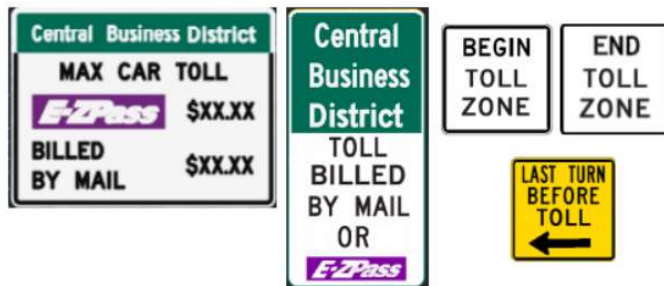
Typical Infrastructure – Mast arm mounted equipment



Typical Infrastructure – Bridge or sign gantry mounted



Typical Infrastructure – Signage



Typical Infrastructure Installation



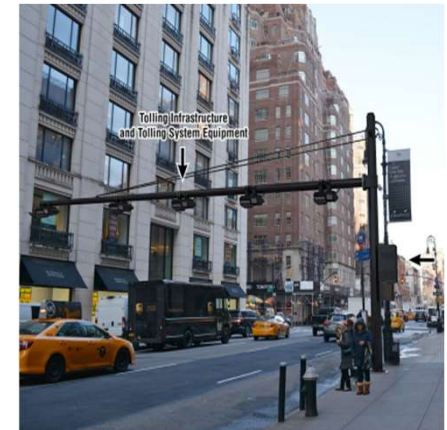
Foundation Excavation



Foundation Placement



Foundation Protection



Pole and Equipment Installation

Installation Affects

- Parking will be restricted one to two car lengths on either side of Detection Point Poles
- Work will generally occur during the day for excavation and construction of foundations
- Detection point pole installation will occur at night
- Duration of work will generally be one to two weeks per site

Implementation Schedule

Federal Environmental
Approval: FONSI June 27



**Installation - Detection
Points**



Installation - Signage



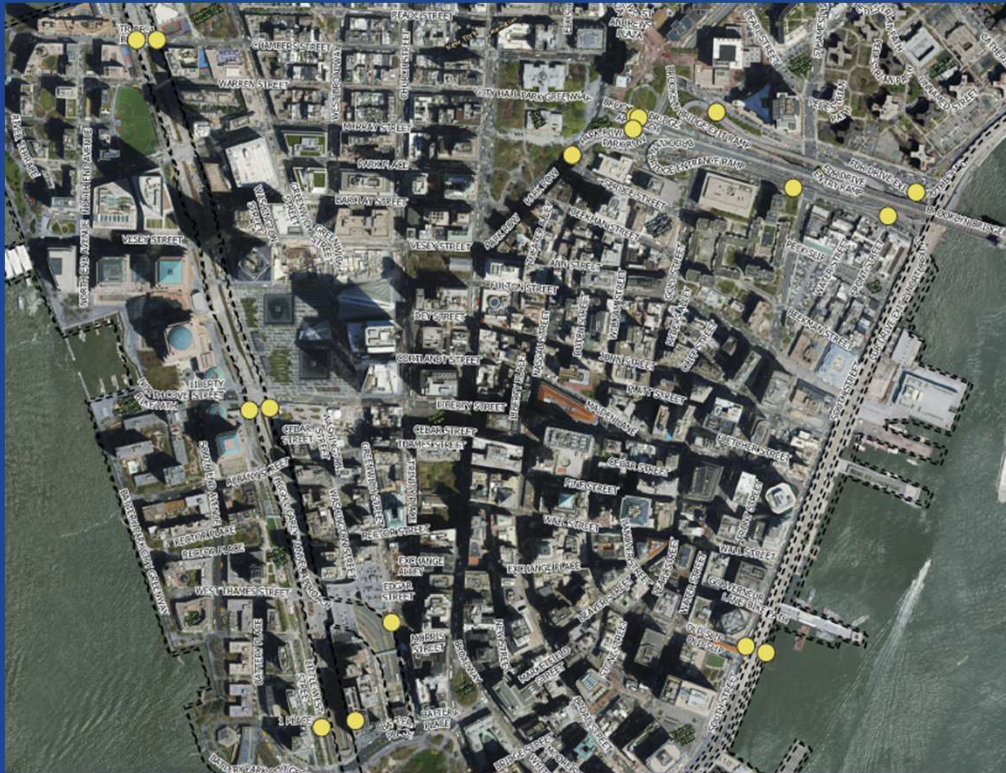
Punchlist



**60 Day Public Information
Campaign Prior to Go-Live**



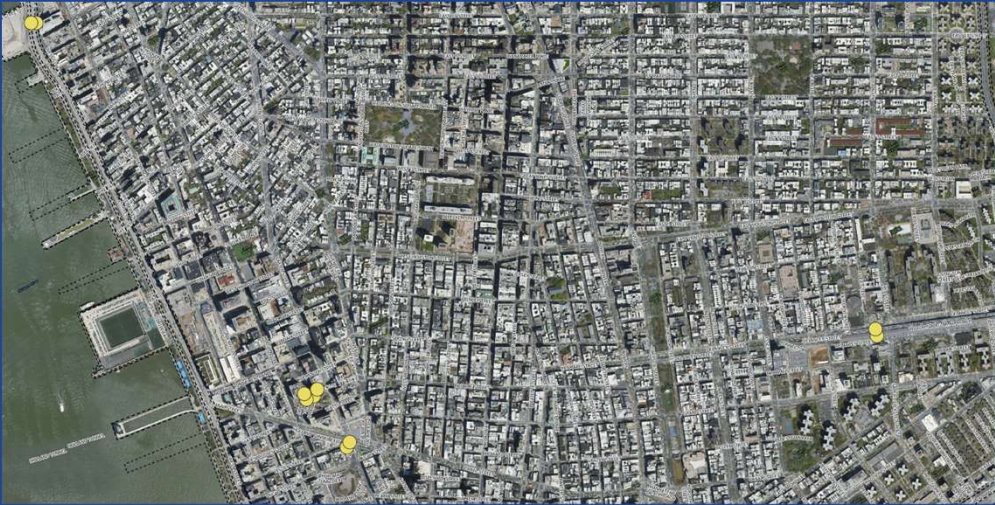
Community Board 1



Jul | Aug | Sept | Oct | Nov | Dec | Jan

- 182 West Street
- 187 West Street
- Brooklyn Bridge Ramp to FDR Dr. and Pearl Street
- Brooklyn Bridge Ramp from Park Row near 51 Park Row
- Brooklyn Bridge to Center Street near 114 Park Row
- Brooklyn Bridge to Park Row near 114 Park Row
- Brooklyn Bridge Ramp from Pearl Street near 345 Pearl Street
- Brooklyn Bridge to FDR Dr. near 255 Front Street
- Brooklyn Bridge near 104 Park Row
- 17 Battery Place
- 1 World Financial Center
- 99 West Street
- 263 Hudson River Greenway
- Holland Tunnel Exit near 69 Varick Street
- FDR Dr. near 100 Old Slip
- FDR Dr. near 40 South Street

Community Boards 2&3



Jul | Aug | Sept | Oct | Nov | Dec | Jan

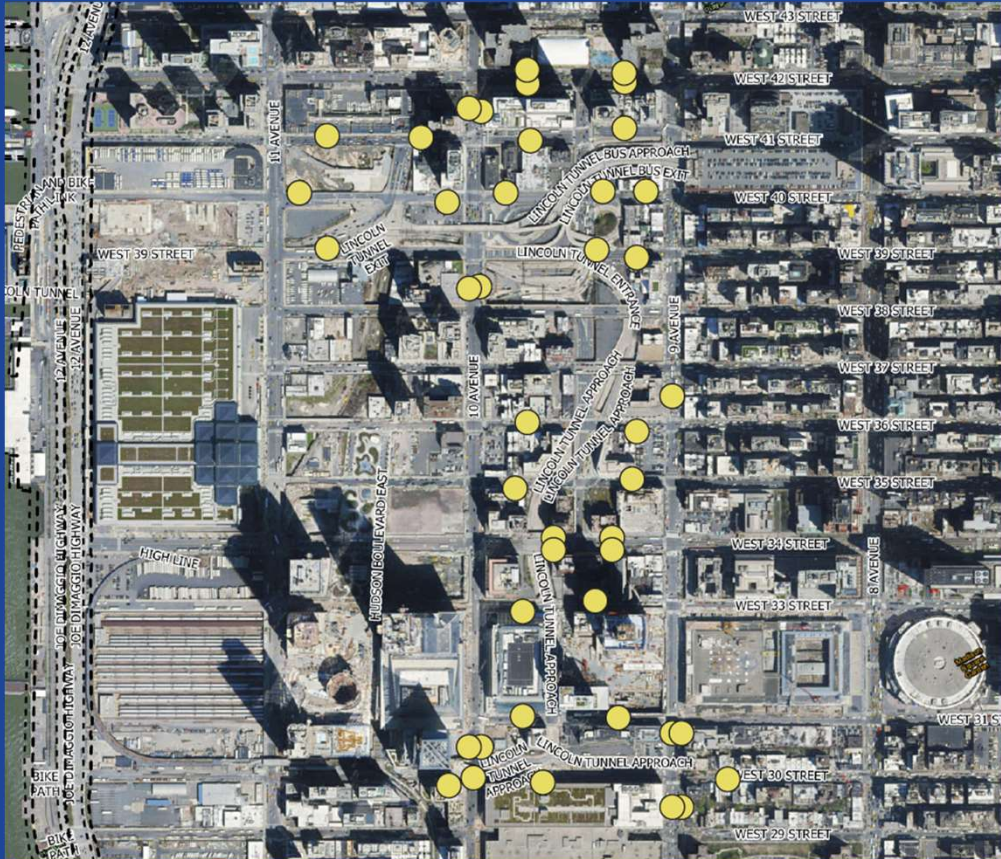
Community Board 2

- 250 Hudson Street
- Holland Tunnel Entrance near 576 Broome Street
- Holland Tunnel Entrance near 250 Hudson Street
- 566 Broome Street
- Holland Tunnel Exit near 428 Canal Street
- 555 West Street (SB)
- 555 West Street (NB)

Community Board 3

- Brooklyn Bridge to FDR Dr. near 145 South Street
- Williamsburg Bridge near 234 Delancey Street
- Williamsburg Bridge near 195 Delancey Street
- Manhattan Bridge near 68 Division Street (two sites)

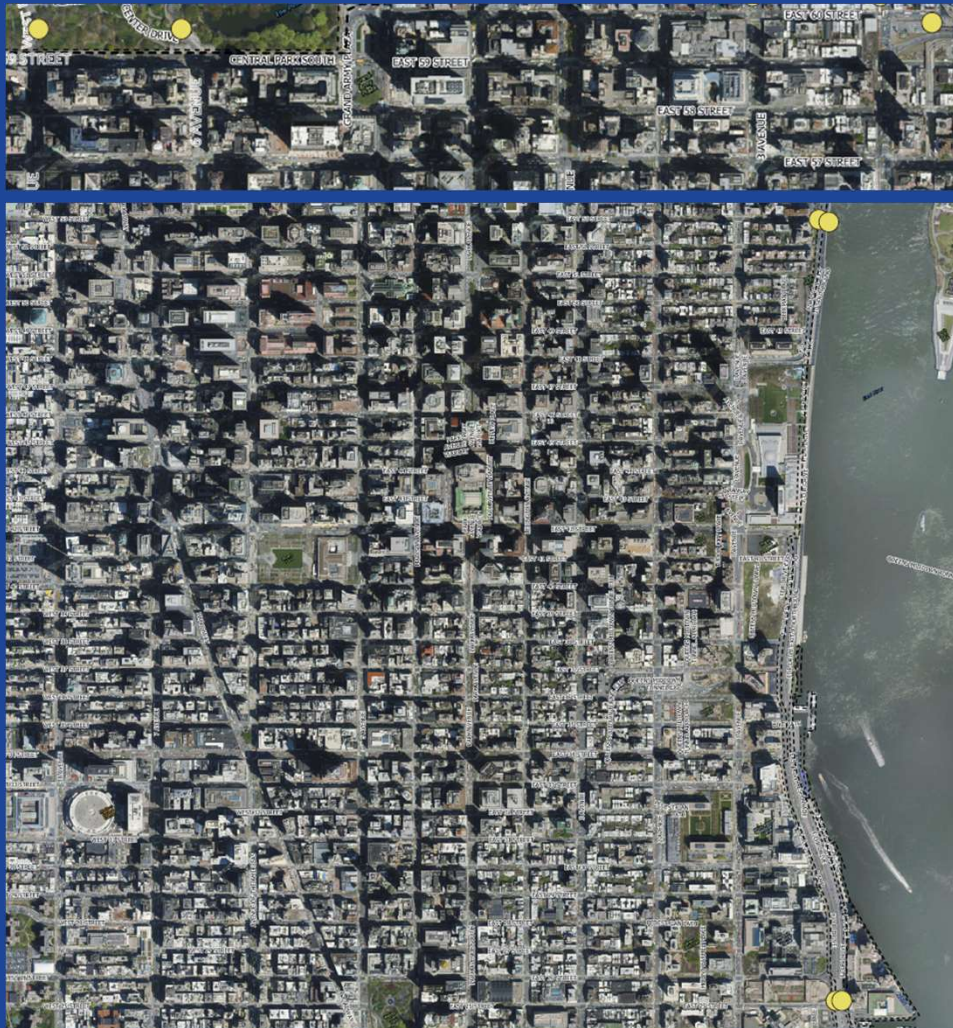
Community Board 4



Jul | Aug | Sept | Oct | Nov | Dec | Jan

- 412 West 36th Street
- 550 West 41st Street
- 403 West 41st Street
- 480 West 42nd Street
- 544 West 39th Street
- 541 9th Avenue
- 510 10th Avenue
- 455 West 35th Street
- 507 West 40th Street
- 406 West 39th Street
- 469 West 42nd Street
- 45 West 60th Street
- 581 West 40th Street
- 411 West 35th Street
- 450 West 36th Street
- 475 9th Avenue
- 417 West 39th Street
- 341 9th Avenue
- 506 West 30th Street
- 361 9th Avenue
- 419 West 34th Street
- 509 10th Avenue
- 406 West 31st Street
- 412 West 42nd Street
- 411 West 42nd Street
- 570 10th Avenue
- 409 West 40th Street
- 433 West 34th Street
- 460 West 34th Street
- 561 10th Avenue
- 510 West 41st Street
- 350 9th Avenue
- 831 12th Ave (two sites)
- 10 Hudson Yards
- 500 West 30th Street
- 561 10th Avenue
- 3050 West 30th Street
- 442 West 31st Street
- 362 9th Avenue
- 360 West 30th Street

Community Boards 5&6



Jul	Aug	Sept	Oct	Nov	Dec	Jan
	CB 6		CB 5			

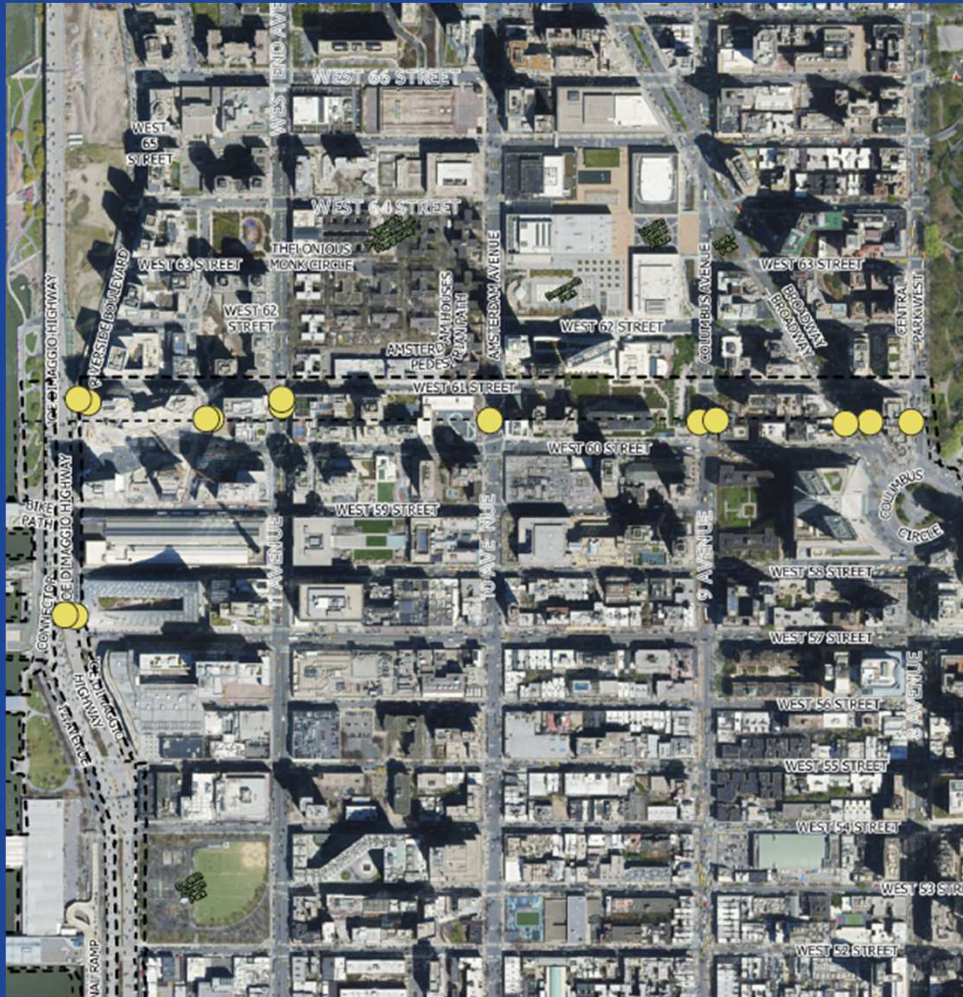
Community Board 5

- 199 West 59th Street
- 69 Central Park South

Community Board 6

- FDR Dr. near 450 East 53rd Street (two sites)
- FDR Dr. near 431 East 25th Street
- FDR Dr. near 425 East 25th Street
- Ed Koch Queensboro Bridge near 336 East 59th Street
- Ed Koch Queensboro Bridge near 300 East 58th Street

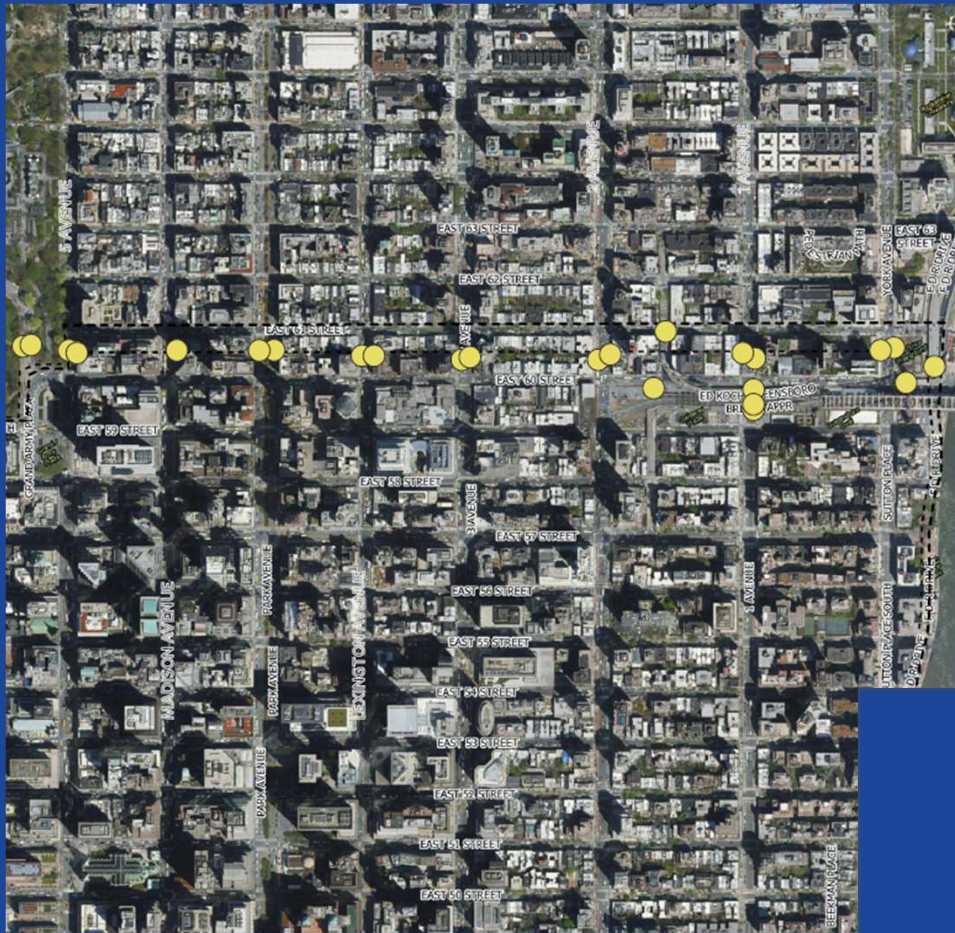
Community Board 7



Jul | Aug | Sept | Oct | Nov | Dec | Jan

- 30 West End Avenue
- 113 West 60th Street
- 1832 Broadway
- 21 West End Avenue
- 4 Central Park West
- 10 Riverside Blvd.
- 400 West 61st Street
- 9 Riverside Blvd.
- 1841 Broadway
- 450 West 41st Street

Community Board 8



Jul | Aug | Sept | Oct | Nov | Dec | Jan

- 1113 York Avenue
- FDR Dr. near 501 East 60th Street
- 1023 3rd Avenue
- 1148 2nd Avenue
- 530 Park Avenue
- 525 Park Avenue
- 1102 1st Avenue
- 767 Lexington Avenue
- 1113 York Avenue (two sites)
- 770 Lexington Avenue
- 1020 3rd Avenue
- 1103 1st Avenue
- 252 East 61st Street
- 2 East 61st Street
- 790 5th Avenue
- 655 Madison Avenue
- Ed Koch Queensboro Bridge near 10 EKQB Path
- Ed Koch Queensboro Bridge near 1086 1st Avenue
- Ed Koch Queensboro Bridge near 310 East 61st Street
- Ed Koch Queensboro Bridge near 321 East 60th Street
- 790 5th Avenue
- 793 5th Avenue

Questions

- CBDTPConstruction@mtabt.org
- Hotline: 877-201-4015



Bridges and Tunnels

CENTRAL BUSINESS DISTRICT TOLLING PROGRAM

TO INQUIRE ABOUT CONSTRUCTION,
PLEASE REACH US AT:

CBDTPCONSTRUCTION@MTABT.ORG

OR

(877) 201-4015

IF YOU HAVE ANY QUESTIONS RELATED TO
THE CENTRAL BUSINESS DISTRICT TOLLING
PROGRAM, PLEASE VISIT:

NEW.MTA.INFO/PROJECT/CBDTP



Bridges and Tunnels